

SIGA

STRUCTURAL ENGINEERING

Siga News

April 2010

How do you stop a crane?



Project:

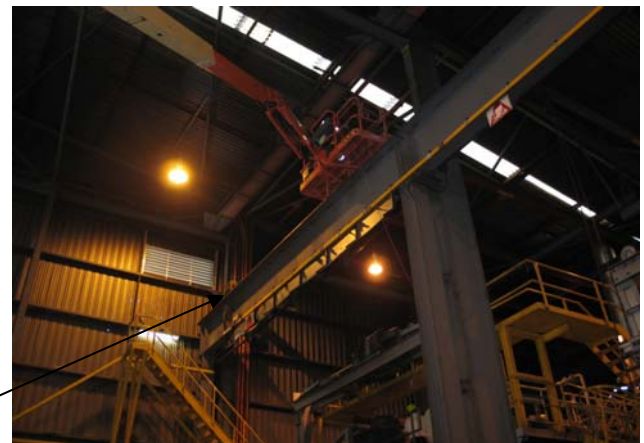
Industrial – Sydney West

Key Objectives

- To provide a new design to enable the crane to stop – on time.
- The design was unconventional in that it would be temporary.
- Determining how the stop was to be utilised, along with the design and site limitations.

Challenges

- Determining the existing design criteria, such as beam, rail, buffer.
- Determining the geometry of the new crane stop, in particular how high, how wide, what is existing, what are the loads?
- Stopping a 150 tonne crane travelling at nearly 2 metres per second.



Existing Crane Stop



Siga Solutions

- Siga provided the professional advice, design and documentation to ensure the stop was designed on time and functional as was required.

Zachary's Joke:

Q – There were three men in a boat when it tipped over but only two got their hair wet. Why?

A – Because the third was bald.

Zachary Simone – 12 years old – hopes you enjoy this joke.

Need help on an upcoming project? - then please call me today.

Frank Simone